

[View this email in your browser](#)

Global Health CONNECTION

Your monthly source of Rutgers global health news, events, and resources
JULY 2025

Resilient New Jersey: Continuing Our Collaboration with the Center for Local Supply Chain Resiliency



First photo: Among the collaborators involved with Rutgers Global Health Institute's efforts in Trenton are Manuel Hernandez, Alejandro Cruz, Kevin Lyons, and Dimas Reyes (pictured from left to right).

Second photo: Local business owners and Latino Merchants Association members at a meeting with Dr. Kevin Lyons.

In 2023, Rutgers Global Health Institute partnered with **Dr. Kevin Lyons** (Rutgers Business School) and the Center for Local Supply Chain Resiliency to help bring its **Anchor Program** to Trenton and Mercer County. We wanted to combine the work we do with our Resilient New Jersey program with Dr. Lyon's Anchor Program so that we could bring even more help to small, minority owned businesses in Trenton. You can read more about the launch here: <https://globalhealth.rutgers.edu/news/ongoing-institute-partnerships-support-the-health-of-small-businesses-and-their-communities/>

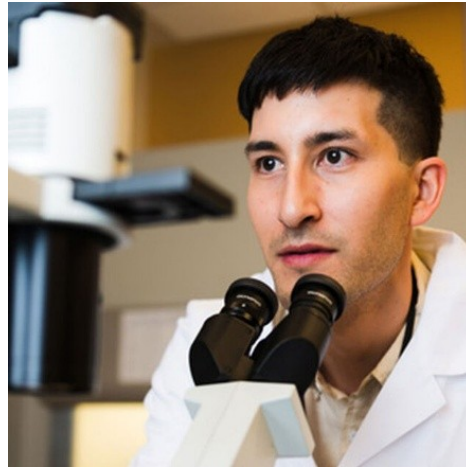
We continue to expand what we are now calling the *Mercer County Anchor Program* with the help of one of our main partners in Trenton, the Latino Merchants Association. In the spring of 2024, we conducted several business visits with our first group of participants. We met with the owners and employees one-on-one and learn more about their business and future goals.

[Subscribe](#)[Past Issues](#)[Translate ▼](#)

connect them to more anchor institutions for potential new business contracts.

At Rutgers Global Health Institute, we believe that healthy businesses equal healthy communities. By helping local businesses succeed, we help ensure that the local community also succeeds.

Principal Faculty Spotlight: Dr. Bobby Brooke Herrera



In our new strategic plan for the Rutgers Global Health Institute, we will focus on three impact areas: **Cancer Care and Prevention for All; Healthy Children, Thriving Communities; and Infectious Disease Solutions**. These three areas highlight the priorities of our principal faculty's work in advancing global health equity. To highlight their contributions to these three impact areas of global health, we want to showcase the work of our principal faculty members in the Global Health Connection.

This month, we would like to showcase Dr. Bobby Brooke Herrera's development of the world's first rapid molecular test for the La Crosse virus and his and his partners' subsequent pursuits in developing a vaccine.

Bobby Brooke Herrera: Innovating Vaccines for Global Health Preparedness

[Watch the full video below to learn more about his innovative work and its global impact.](#)

Celebrating Rutgers Global Health Institute's Core Faculty Member, Dr. Riva Touger-Decker

[Subscribe](#)[Past Issues](#)[Translate ▼](#)

Please join us in celebrating **Dr. Riva Touger-Decker**, who will be retiring in August after an impactful global health career at Rutgers.

Dr. Touger-Decker is a globally recognized leader in nutrition and global health. She has served in numerous leadership roles, including Associate Dean of Global Affairs at the Rutgers School of Health Professions. She has also served as a professor there and at the School of Dental Medicine. Riva has been a driving force in shaping international collaborations and education through several long-term partnerships.

As one of Rutgers' most dedicated faculty in global health, Dr. Touger-Decker has also been a tremendous supporter of Rutgers Global Health Institute. We are deeply grateful for Riva's contributions, and we look forward to continuing our collaboration with her as a Rutgers Global Health Institute affiliate member.

Did someone forward you this email? [Subscribe here.](#)

Copyright © 2025 Rutgers Global Health Institute. All rights reserved.

Want to change how you receive these emails?
You can [update your preferences](#) or [unsubscribe from this list](#).